



Upper Primary Parents' Briefing

School Leaders' Address
11 February 2022

Agenda

- Home-School Partnership
- Assessment Matters
 - 2022 PSLE scoring
 - Supporting our Students' Learning
 - 2022 Academic Year Plan for Upper Primary Students
- Upper Primary curriculum matters
- PSLE Matters
- DSA-Sec Exercise

Partnering Parents





Home-School Partnership

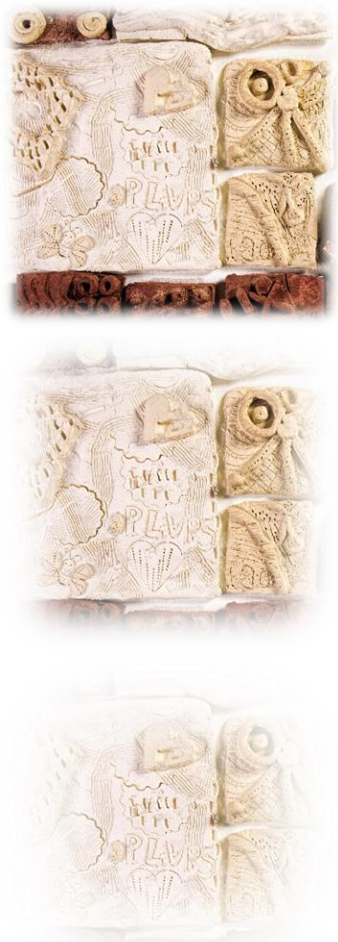
- ❖ Attendance is critical. Do ensure that your child attends school daily except when he/she is unwell. Doctor's MC must be provided.
- ❖ Teachers will communicate and coordinate on the amount of homework to be given per day / school holidays.
- ❖ Ensure that your child has a proper breakfast at home before coming to school. A meal break will be given in class before/after recess.

Home-School Partnership (Punctuality for School)

- ❖ Inculcating the value of responsibility by being punctual – report to school by **7.30 a.m.**
- ❖ Understanding consequences
 - Late coming: arriving after **7.30 a.m.**
 - After the 3rd instance of late coming, Form Teacher will call the parents
 - After the 6th instance of late coming, there will be School-Parent conferencing
 - For persistent late coming, a “Fair” conduct grade would be given

Home-School Partnership (School Discipline and Tone)

- ❖ The school should be a safe environment for all students to learn in.
- ❖ In order for the students to feel safe (physically and psychologically), consequences will be meted out for misbehaviour, including bullying, use of physical force and use of hurtful words/vulgarities.
- ❖ We would like to work together in strong partnership with all parents in order to ensure that the school remains a safe place for students to learn and grow.



Home-School Partnership

- ❖ Celebrate your child's successes, both big and small;
- ❖ Provide your child with support and encouragement;
- ❖ Make time to find out about your child's day;
- ❖ Praise your child as a kind word goes a long way!



Home-School Partnership

❖ Main communication channels with the school:

1. Student Diary
2. Class Teachers' email address and direct phone extension number
3. MOE iCON email
4. MOE Parents Gateway App

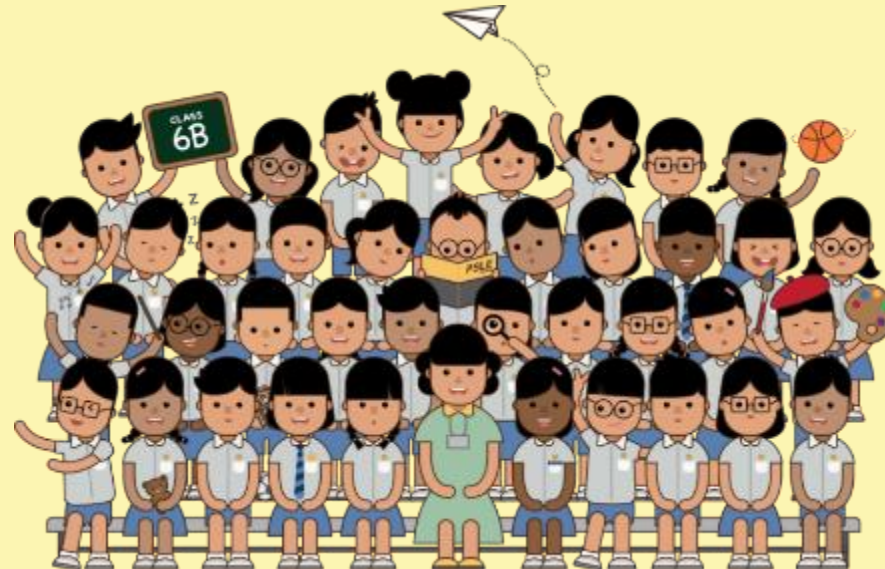


Assessment Matters - PSLE

CHANGES TO THE PSLE SCORING AND S1 POSTING SYSTEMS

**SUPPORTING STUDENTS AND PARENTS IN MAKING
INFORMED SCHOOL CHOICES FOR PSLE**

2022 Briefing Deck to P5 and P6 Parents



OVERVIEW

RECAP

- How the PSLE Scoring System Works
- How the S1 Posting System Works

SUPPORTING STUDENTS AND THEIR PARENTS IN MAKING INFORMED SCHOOL CHOICES

- Understanding the PSLE Score Ranges
- School Choice Journey

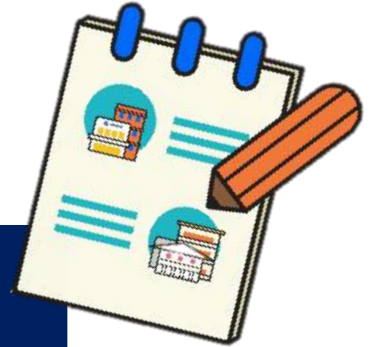


WHAT IS THE INTENT OF THE PSLE?



A useful checkpoint at the end of primary school

A fair way to determine secondary school posting



Over the years, we have been changing the education system to help our students discover and develop their strengths and interests, while moving away from an over-emphasis on academic results. Our PSLE Scoring changes reduce an over-emphasis on academic results by:

1

Reducing fine differentiation of students' examination results at a young age.

2

Recognising a student's level of achievement, regardless of how his/her peers have done.

3

Encouraging families to choose secondary schools holistically based on students' strengths, interests and abilities.

HOW THE PSLE SCORING SYSTEM WORKS



FROM T-SCORE TO SCORING BANDS

a) Reduces fine differentiation of students' examination results at a young age

- Students with similar scores in each subject are grouped into wider scoring bands measured in 8 ALs.

b) Reflects a student's individual level of achievement

- Students' ALs for each subject reflect their level of achievement, rather than how they have performed relative to their peers.

AL	RAW MARK RANGE
1	≥ 90
2	85 – 89
3	80 – 84
4	75 – 79
5	65 – 74
6	45 – 64
7	20 – 44
8	< 20

GRADING OF FOUNDATION SUBJECT GRADES

- Foundation subject grades are graded in scoring bands from **AL A to C**.
- To derive a student's overall PSLE Score for S1 Posting, AL A to AL C for Foundation level subjects are **mapped to AL 6 to AL 8 of Standard level subjects respectively**.
- Similar to the PSLE T-score system, this mapping is based on the learning and assessment load of the subjects, and informs students of how ready they are for the curriculum in secondary school.

FOUNDATION LEVEL AL	FOUNDATION RAW MARK RANGE	EQUIVALENT STANDARD LEVEL AL
A	75 – 100	6
B	30 – 74	7
C	< 30	8

4 SUBJECT ALs WILL BE ADDED TO FORM THE OVERALL PSLE SCORE

- The PSLE Score can range from 4 to 32, with 4 being the best.
- Students are placed in secondary school courses based on their PSLE Score – Express, Normal (Academic) or Normal (Technical).

ENGLISH LANGUAGE	AL 3
MOTHER TONGUE LANGUAGE	AL 2
MATHEMATICS	AL 1
SCIENCE	AL 2
PSLE SCORE: 8	

PLACEMENT OUTCOME	PSLE SCORE
EXPRESS	4 – 20
EXPRESS / N(A) OPTION	21 – 22
N(A)	23 – 24
N(A) / N(T) OPTION	25
N(T)	26 – 30, with AL 7 or better in both EL <u>and</u> MA

Express, N(A) and N(T) courses will be phased out by 2024.

ELIGIBILITY CRITERIA FOR HIGHER MOTHER TONGUE LANGUAGE (HMTL)

ELIGIBILITY CRITERIA FOR HMTL

- (i) An overall PSLE Score of 8 or better**
- or**
- (ii) An overall PSLE Score of 9 to 14 (inclusive); and attain**
 - AL 1 / AL 2 in MTL or**
 - Distinction / Merit in HMTL**

- The eligibility criteria for taking HMTL takes reference from past criteria.
- It ensures students can cope with the higher academic load.
- Secondary schools continue to have the flexibility to offer HMTL to students who do not meet the criteria if they:
 - have high ability and interest in MTL, and
 - are able to cope with the learning load required.

ELIGIBILITY CRITERIA FOR MOTHER TONGUE LANGUAGE (MTL) 'B' IN SECONDARY SCHOOLS

- The MTL 'B' curriculum is designed to help students in the Express and N(A) courses who face exceptional difficulty coping with MTL.

ELIGIBILITY CRITERIA FOR MTL 'B' (FOR STUDENTS OFFERED THE EXPRESS OR N(A) COURSE)
AL 7 or 8 in Standard MTL or AL B or C in Foundation MTL

- Schools have discretion to offer MTL 'B' to students who face exceptional difficulty with MTL but do not meet the eligibility criteria at Secondary 1 based on PSLE results.
- As students progress in secondary school, they may also take up MTL 'B' if they are assessed to be suitable by their schools.

SUBJECT-BASED BANDING (SECONDARY)

[SBB (SEC)] ELIGIBILITY CRITERIA

- SBB (Sec) provides students posted to the N(A) and (NT) courses with **greater flexibility** to take various subjects at a more demanding level based on their subject-specific strengths.
- Under the new PSLE Scoring System, the SBB (Sec) eligibility criteria is as follows:

FOR STUDENTS POSTED TO THE N(A) OR N(T) COURSE	
PSLE SUBJECT GRADE	OPTION TO TAKE SUBJECT AT
AL 5 or better in a Standard level subject	Express level
AL 6 or better in a Standard level subject <u>OR</u> AL A in a Foundation level subject	N(A) level

- As students progress in secondary school, they continue to have opportunities at various junctures to take subjects at more demanding levels based on their performance in school.
- Students posted to the Express course will take all their subjects at the Express level.

SUBJECT-BASED BANDING (SECONDARY) [SBB (SEC)] ELIGIBILITY CRITERIA

**N(A)-Level
English**

**N(A)-Level
Mother Tongue**

**Express-
Level
Math**

**N(A)-Level
Science**

EXAMPLE:

ENGLISH LANGUAGE AL6

MOTHER TONGUE
LANGUAGE AL6

MATHEMATICS AL5

SCIENCE AL6

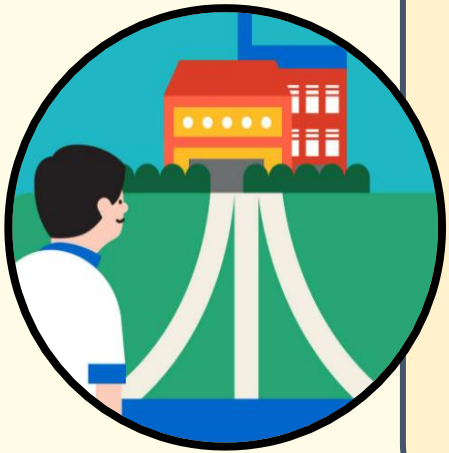
PSLE SCORE: 23

Offered N(A) course



FULL SUBJECT-BASED BANDING (FULL SBB)

- MOE is expanding Subject-Based Banding to Full SBB in secondary schools.
- This is in line with the changes to PSLE Scoring to recognise each student's own level of achievement and encourage them to choose secondary schools that fit their strengths and interests.
- Full SBB aims to further nurture the joy of learning and develop multiple pathways to cater to the different student profiles. Through Full SBB, we want students to:



- have greater ownership of their education, and learn each subject at the level that best caters to their overall strengths, interests and learning needs, and
- have more opportunities to interact with friends of different strengths and interests.
- not be held back by negative self-concepts and labelling.
- have increased access to post-sec pathways, while having strong fundamentals in their subjects so that they are able to thrive in the pathway they choose.

FULL SUBJECT-BASED BANDING (FULL SBB)

- The following are changes that students will experience from Full SBB:

- Removal of Express, N(A) and N(T) courses
- Mixed form classes
- Common Curriculum subjects
- Offering subjects at a more demanding level, including Humanities subjects
- Common National Examinations
- Post-secondary Admissions *(More information will be made available at a later date.)*



FULL SUBJECT-BASED BANDING (FULL SBB) TIMELINE

Link to PSLE-FSBB Microsite



<https://go.gov.sg/pslefsbb>



2020

Full SBB pilot commenced in 28 secondary schools. Feedback from pilot schools has been positive.



2022

Full SBB will continue to be rolled out to more schools in phases.



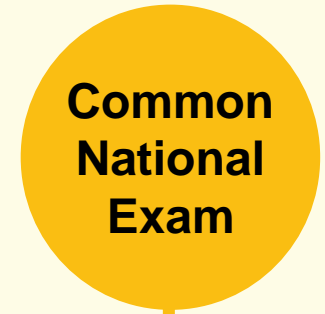
2023



2024

From 2024,

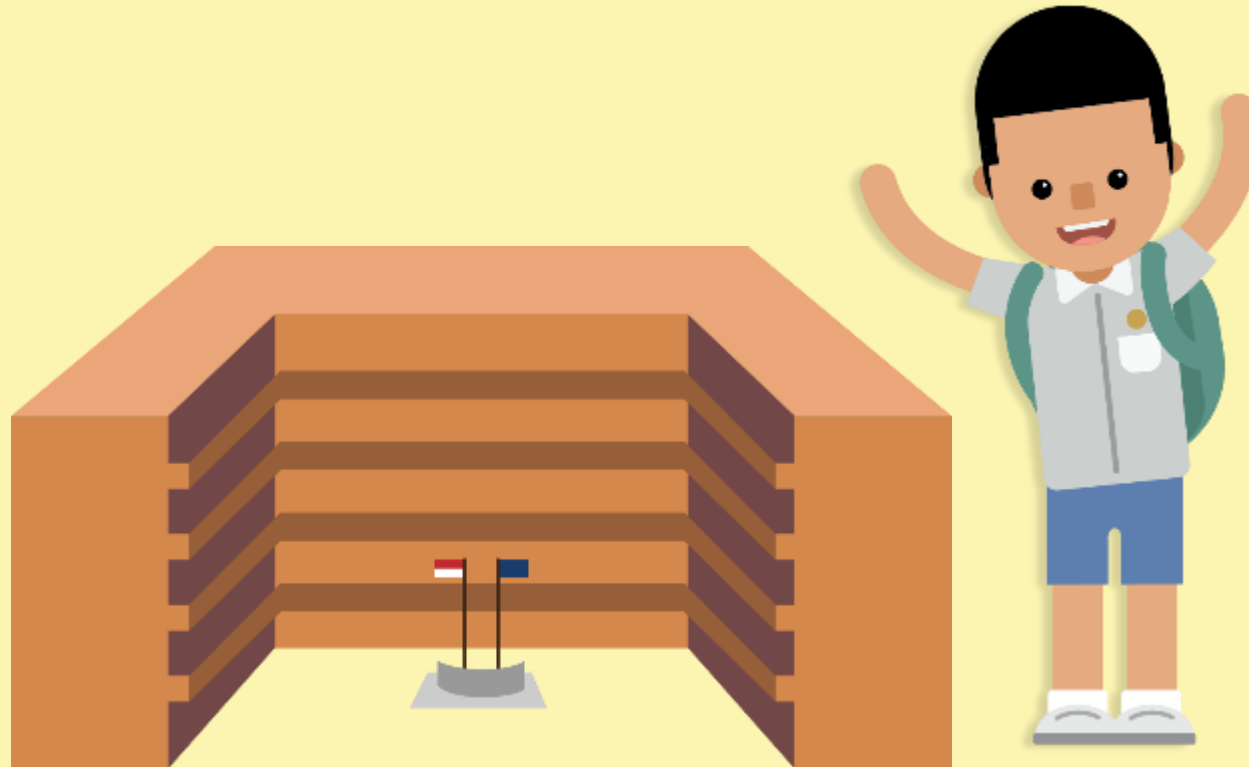
- There will no longer be Express, N(A) and N(T) courses.
- Students will be able to study subjects at different levels that suit their interests, strengths and learning needs.



2027

From 2027, students will sit for the common national examination and receive a new national certification with subjects at different levels.

HOW THE S1 POSTING SYSTEM WORKS



CHOICE ORDER OF SCHOOLS MATTERS MORE

- Students continue to have **six choices** in selecting their secondary schools.
- Similar to past years, students continue to be posted to a secondary school based on **academic merit, i.e., PSLE Score**, and their **school choice order**.
- If there are two or more students with the same PSLE Score vying for the last remaining place(s) in a school, the following tie-breakers will be used in the following order:
 1. **CITIZENSHIP**
 2. **CHOICE ORDER OF SCHOOLS (New tie-breaker from 2021 onwards)**
 3. **COMPUTERISED BALLOTING**
- The new tie-breaker based on school choice order recognises the different considerations that families have in making school choices.








Tie-breakers

in the new S1 Posting System

Tie-breakers are used only if there are two or more students with the same PSLE Score vying for the last available place(s) in a school.

Here's a simplified example.

5 students are vying for the last places in the schools of their choice.

Jane Singapore Citizen 16 pts	SCHOOL CHOICES: 1) Sch A 2) Sch ... 3) Sch ... 4) Sch ...	
Bryan Singapore Citizen 20 pts	SCHOOL CHOICES: 1) Sch B 2) Sch ... 3) Sch ... 4) Sch ...	
Mary Singapore Citizen 20 pts	SCHOOL CHOICES: 1) Sch A 2) Sch B 3) Sch C 4) Sch ...	
Alan Permanent Resident 20 pts	SCHOOL CHOICES: 1) Sch A 2) Sch B 3) Sch D 4) Sch ...	
Rina Permanent Resident 20 pts	SCHOOL CHOICES: 1) Sch A 2) Sch B 3) Sch D 4) Sch E	



Students with better scores will be posted first



Tie-breaker #1: Citizenship



Tie-breaker #2: Choice order of schools



Tie-breaker #3: Computerised balloting

Jane has a better PSLE score. She will be posted first, to **School A**.



Bryan, Mary, Alan and Rina have the same score.

As Jane has taken the last available place in School A, Bryan, Mary, Alan and Rina will vie for the last available place in their next choice, **School B**.

Bryan and Mary are Singapore Citizens. They will have priority to enter **School B**.



Alan and Rina will be tie-broken out as they are Permanent Residents. They will be considered for their next choice, **School D**.

Because Bryan ranked School B higher than Mary, he will be posted to **School B**.



Since Bryan has taken the last place in School B, Mary will be posted to **School C**.



Alan and Rina have both ranked School D as their third choice. They will go through computerised balloting to vie for the last remaining place in **School D**.

Through computerised balloting, Alan is posted to **School D**.



Since Alan has taken the last place in School D, Rina will be posted to her fourth choice, **School E**.

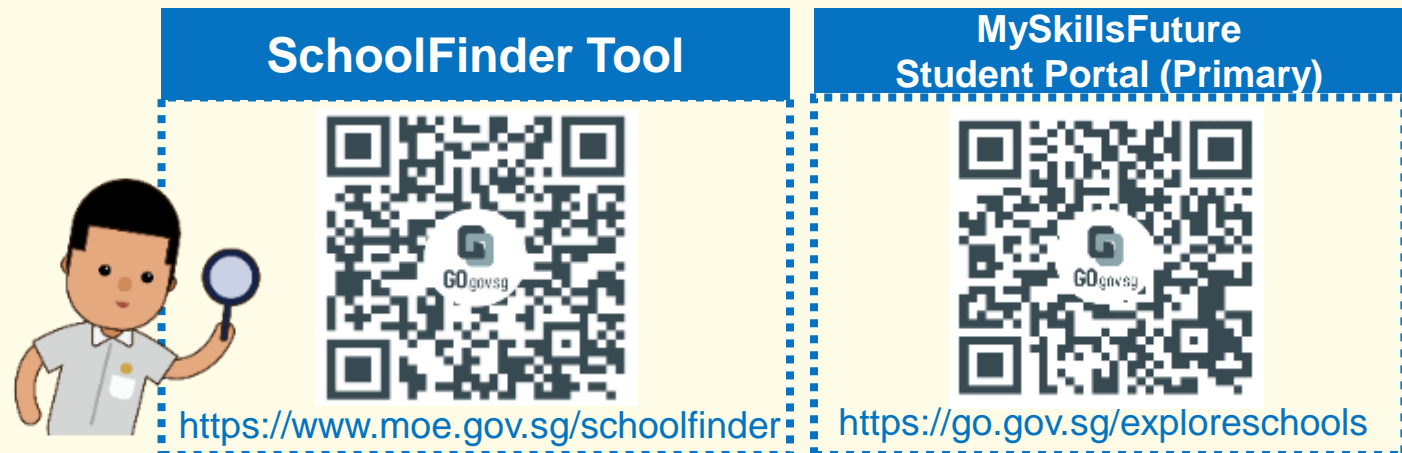


PSLE SCORE RANGES FOR INDIVIDUAL SECONDARY SCHOOLS



PSLE SCORE RANGES FOR ALL SECONDARY SCHOOLS

- Use the PSLE Score ranges as a reference alongside other important factors, such as the school's distinctive programmes, Co-Curricular Activities (CCA), culture, ethos, and proximity to home when shortlisting school choices that would best fit a student's educational needs.
- The 2021 PSLE Score ranges for individual secondary schools will be available for your reference on <https://moe.gov.sg/schoolfinder> and <https://go.gov.sg/exploreschools> by end March 2022. They reflect the PSLE scores of the student posted into these schools at the 2021 S1 Posting Exercise.
- A school's PSLE Score range (including Cut-Off-Point) for a particular year is not pre-determined before the posting, and may vary from year to year, depending on the cohort's PSLE results and their school choices in that year's S1 Posting Exercise.



PSLE SCORE RANGES FOR INDIVIDUAL SECONDARY SCHOOLS

The PSLE Score range refers to the PSLE Score of the first and last student admitted to a particular school in the previous year via the S1 Posting Exercise. This shows the range of student profiles who enter each school.

Example

XX Secondary School
PSLE Score range of 2021

Express	15	20
Normal (Academic)	21	24
Normal (Technical)	25	28

PSLE Score of the first student
posted into the school in the
respective courses

PSLE Score of the last student posted into the
school in the respective courses [i.e., the school's
Cut-Off Point (COP)]

USE OF HIGHER CHINESE LANGUAGE (HCL) FOR ADMISSION INTO SPECIAL ASSISTANCE PLAN (SAP) SCHOOLS



HCL POSTING ADVANTAGE FOR ENTRY TO SAP SCHOOLS WILL CONTINUE

Students who obtained a Distinction/Merit/Pass for HCL at the PSLE and an overall PSLE Score of 14 or better will receive a posting advantage when applying to SAP schools.

Students will be considered for admission to SAP schools in the following order:



7

NO HCL

Students with better PSLE Scores will be posted first, even if they did not take HCL



8

DISTINCTION



8

MERIT



8

PASS

Amongst students with the same PSLE Score, those with better HCL grades will be posted first



8

NO HCL



9

DISTINCTION

- Students' HCL results are denoted as 'D' (Distinction), 'M' (Merit) or 'P' (Pass).
- Students who obtain (i) a Distinction / Merit / Pass in HCL and (ii) a PSLE Score of 14 or better are eligible for posting advantage to SAP schools.
- Students are ranked taking into account their performance in HCL.
- This posting advantage applies before the tie-breakers for S1 Posting.

EXAMPLE OF AN SAP SCHOOL's PSLE SCORE RANGE

While students need not take HCL to enter SAP schools, students who pass HCL receive a posting advantage for admission. To reflect this, the PSLE Score ranges of SAP schools include the HCL grades of the first and last student admitted in the previous year via S1 Posting.

Example

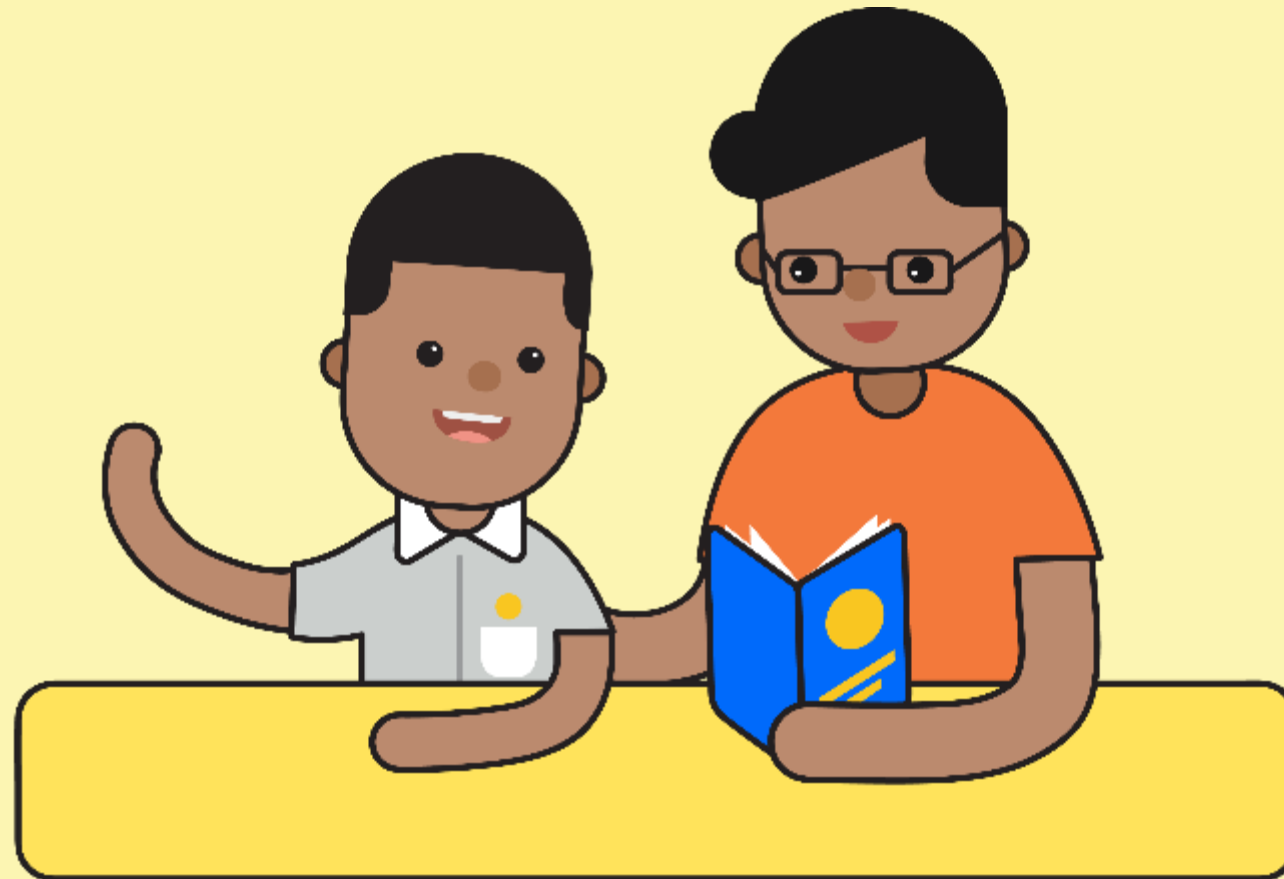
XX Secondary School
PSLE Score range of 2021

Express	5 (D) – 12 (P)
Normal (Academic)	
Normal (Technical)	

PSLE Score and HCL grade of the first student posted into the school in the Express course

PSLE Score and HCL grade of the last student posted into the school in the Express course [i.e. the school's Cut-Off Point (COP)]

CHOOSING SUITABLE SECONDARY SCHOOLS WITH YOUR CHILD



SCHOOL CHOICE JOURNEY

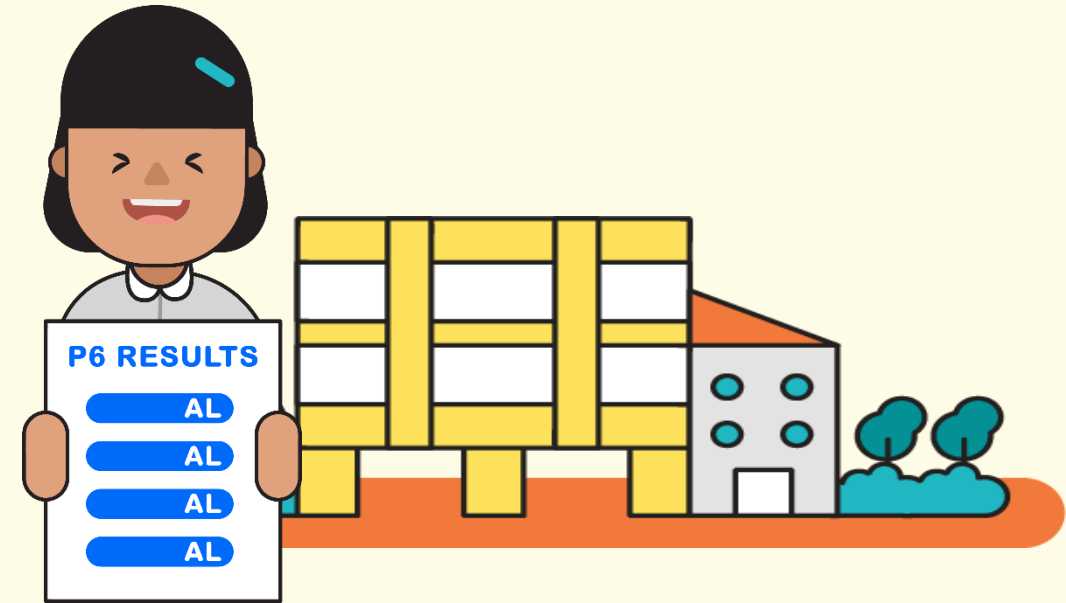
- The PSLE Score ranges are a **useful reference point** for parents and students to consider secondary schools.
- Use this information, together with other **important factors** such as the secondary schools' distinctive programmes, CCAs, ethos and cultures, to shortlist schools that would best fit the educational needs of the student.
- If your child has specific talents and strengths beyond the PSLE (e.g. areas such as sports, performing arts and leadership), consider the **Direct School Admission-Secondary (DSA-Sec)** as an alternative admission pathway to access secondary schools that have talent development programmes in these areas.



PREPARING FOR THE S1 POSTING EXERCISE

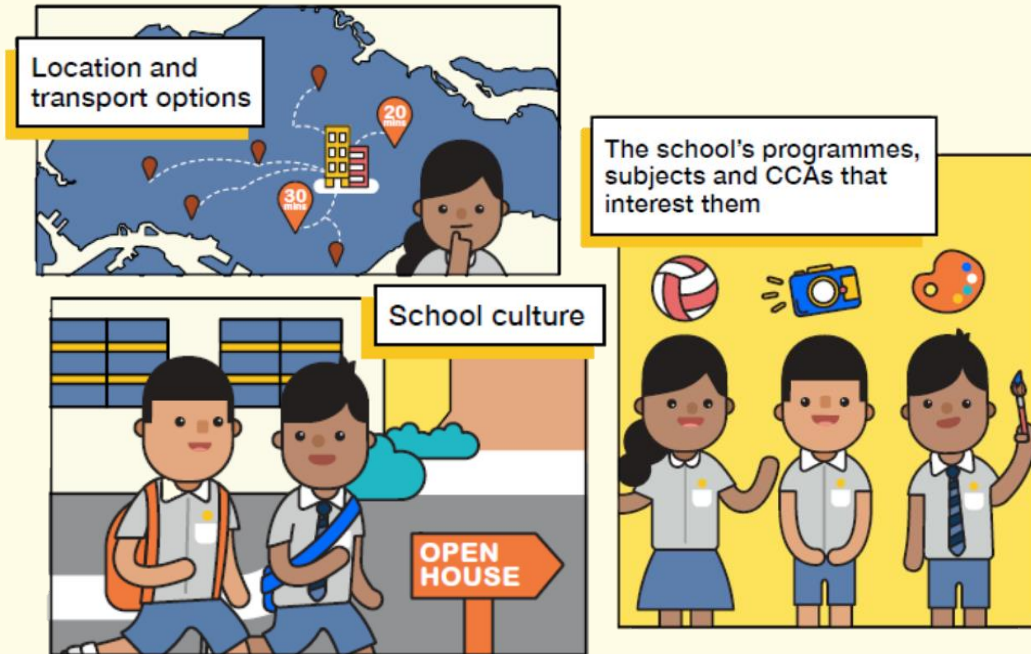


Use all 6 options with a range of Cut-off Points as this will increase your child's chances of being posted to a school of their choice.

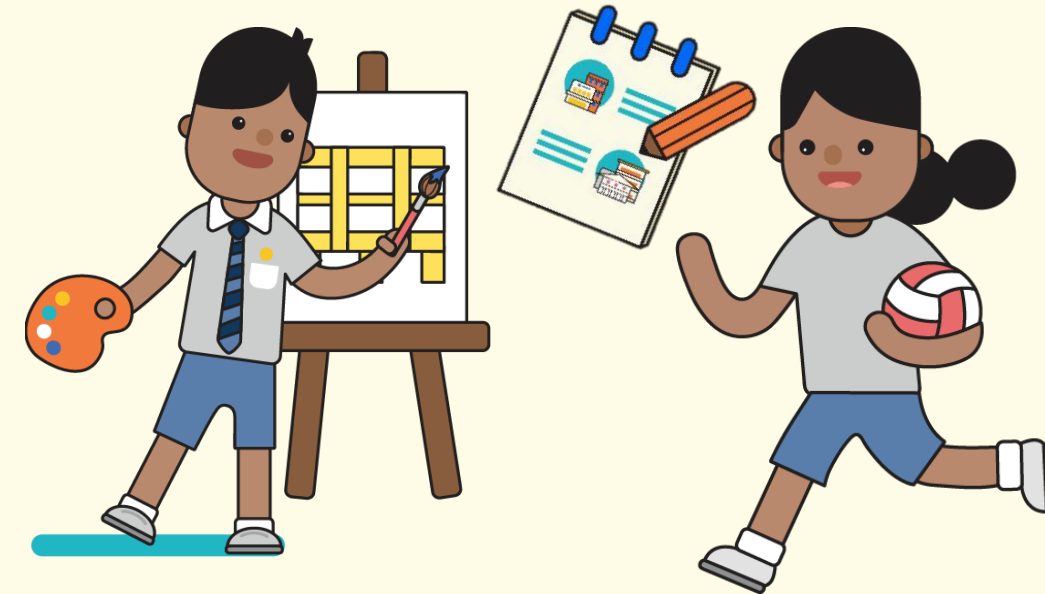


Take reference from schools' PSLE Score ranges, which serves as a guide for you and your child to shortlist school choices. Consider at least 2-3 schools where your child's PSLE Score is better than the school's Cut-off Point.

PREPARING FOR THE S1 POSTING EXERCISE

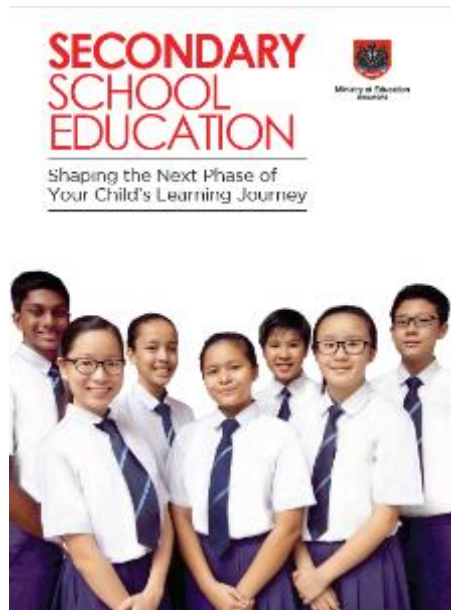


Shortlist schools that offer programmes that cater to the your child's strengths and interests, and that provide suitable learning environments.



Rank your child's preferred school higher in the school choice order. This will increase your child's chances of being posted to that school, if tie-breakers are required.

PREPARING FOR THE S1 POSTING EXERCISE



- Release of **PSLE** results
- Submission of **Secondary 1 Option Form**



- Release of **S1 Posting** results

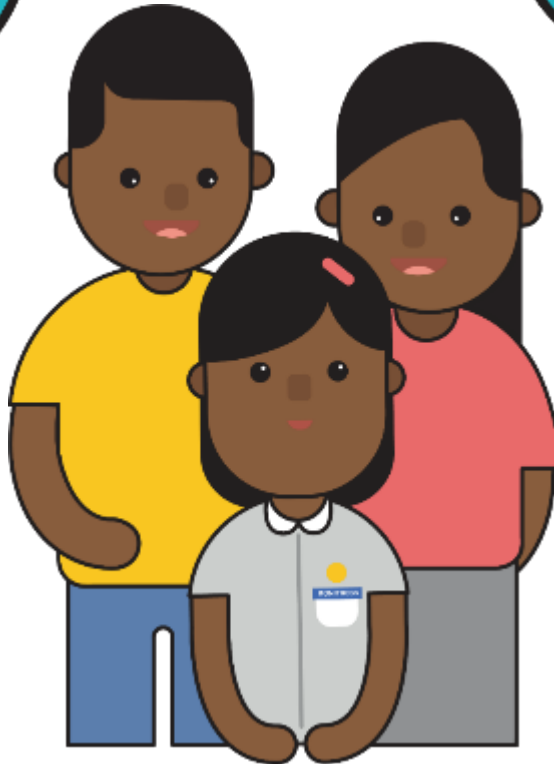


TIPS FOR PARENTS!

Be open and flexible when discussing your child's preferences, needs and choices.

Manage your own expectations and do not project these expectations onto your child.

Have regular conversations with your child to understand more about his/her interests and aspirations.



Affirm your child and offer support when he/she shares his/her plans with you.

FIND OUT MORE ON THE PSLE-FSBB MICROSITE!



<https://go.gov.sg/pslefsbb>



OTHER RESOURCES

1

SchoolFinder Tool

SCHOOL
FINDER



<https://go.gov.sg/secschoolfinder>

2

“Welcome to Secondary School” video



<https://go.gov.sg/welcome-to-secondary-school>

3

Secondary School Education Booklet



<https://go.gov.sg/p-sle-sec-sch-brochure>

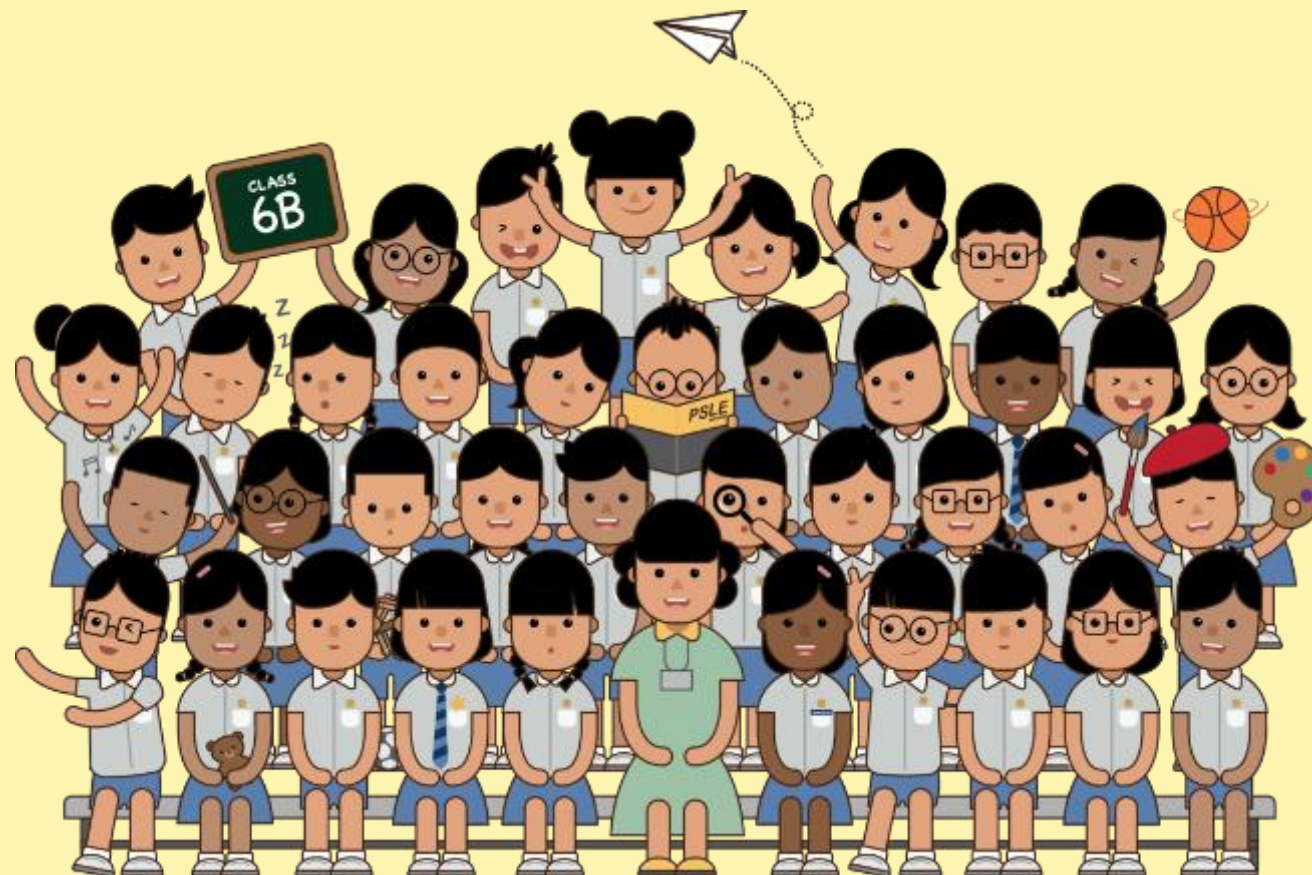
4

ECG Parent Guide



<https://go.gov.sg/parent-guide>

THANK YOU



Supporting our Students' Learning: Typical Week for P5 & P6 students

Monday	Tuesday	Wednesday	Thursday	Friday
CCA (P5 – P6)	Remediation: P6 EL/MA/SC		Remediation: P6 EL/MTL/SC	Curriculum: P5/6 HMT
	Curriculum: P5/6 FMA/FEL		CCA (P5 – P6)	
	CCA (P5 – P6)		Enrichment: E2K Math (P5) English (P5 – P6)	

Academic Year Plan for P5 & P6 students (Semester 1)

Jan	Feb	Mar	Apr	May	Jun
Back to School Prog	21 – 25 Feb: P6 DA (Diagnostic Assessment)	14 – 18: Time for students to consolidate and rest	12 Apr: P6 MYE begins with Oral Weeks 4 to 7: P5 Weighted Assessment 1	9 May onwards: P6 Written papers (main)	30 May – 26 Jun: June School Hols
ASAP begins: 25 Jan [P6]	ASAP begins: 8 Feb [P5]	ASAP	ASAP till 7 Apr		
		9-11 Mar: P6 e-PCTC	26 Apr onwards: P6 Written Paper	27 May: P5 e-PCTC	
CCA begins: 24 Jan [P6]	CCA begins: 14 Feb [P5]	CCA	Last CCA session: 4 April [P5 & P6]	CCA resumes: 23 May [P5]	

Academic Year Plan for P5 & P6 students (Semester 2)

Jul	Aug	Sep	Oct	Nov	Dec
19 Jul: Prelim begins with Oral (tentative) Weeks 4 – 9: P5 Weighted Assessment 2 (tentative)	11-12 Aug: PSLE oral (tentative) 17 Aug: P6 Prelim (LC) (tentative) Weeks 4 – 9: P5 Weighted Assessment 2 (tentative)	8 & 9 Sep [school term break]: P6 ASAP	29 Sep – 5 Oct: PSLE Written (tentative) 12 – 13 Oct P5 Oral 14 Oct LC (tentative)	24 Nov - Release of PSLE results (tentative)	Enjoy the Break!
ASAP: 5 Jul resumes	18 -24 Aug: Prelim (Written) (tentative)	16 Sep: PSLE LC (tentative)	6 Oct: Children's Day celebrations 10 Oct: Post-PSLE Programme		
30 Aug – 2 Sep: P6 e-PCTC	ASAP till 4 Aug		26 Oct – 3 Nov: P5 Written (tentative)	26 Oct – 3 Nov: P5 Written (tentative)	

P6 Assessment Weighting

Examination	Mid-Year (Term 2)	Preliminary (Term 3)
Weighting	100% of Semester 1	100% of Semester 2



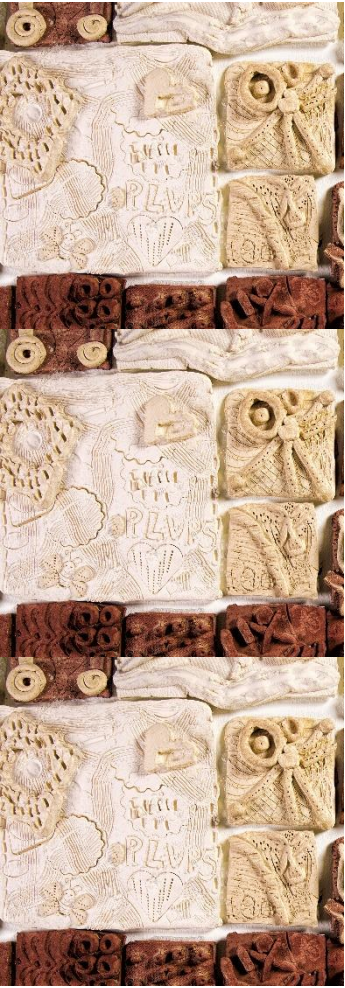
#CuriousMinds

#CaringHearts

#CreativeSpirits

P5 Assessment Weighting

Assessment	Weighted Assessment 1 (Term 2)	Weighted Assessment 2 (Term 3)	End-of-Year Examination (Term 4)
Weighting	15%	15%	70%



#CuriousMinds #CaringHearts #CreativeSpirits

English Language (Standard)

Paper	Component	Item Type	No. of items	Weighting	Duration
1	Situational Writing	Open-ended	1	27.5%	1h 10min
	Continuous Writing	Open-ended	1		
2	Booklet A	Multiple-choice	28	47.5%	1h 50min
	Booklet B	Open-ended	67		
3	Listening Comprehension	Multiple-choice	20	10%	About 35min
4	Reading Aloud	Open-ended	1 passage	15%	About 10min
	Stimulus-based Conversation	Open-ended	1 visual stimulus		

English Language (Foundation)

Paper	Component	Item Type	No. of items	Weighting	Duration
1	Situational Writing	Open-ended	1	26.7%	1h 10min
	Continuous Writing	Open-ended	1		
2	Booklet A	Multiple-choice	20	40%	1h 20min
	Booklet B	Open-ended	40		
3	Listening Comprehension	Multiple-choice	20	13.3%	About 35min
4	Reading Aloud	Open-ended	1 passage	20%	About 10min
	Stimulus-based Conversation	Open-ended	1 visual stimulus		

Mathematics (Standard)

Paper	Component	Item Type	No. of questions	No. of marks per question	Weighting	Duration
1	Booklet A	Multiple-choice	10	1	45%	1h
			5	2		
	Booklet B	Short answer	5	1		
			10	2		
2	1 booklet <i>Use of calculator is allowed</i>	Short answer	5	2	55%	1h 30min
		Structured/ Long answer	12	3, 4, 5		
Total			47		100%	2h 30min

Mathematics (Foundation)

Paper	Component	Item Type	No. of questions	No. of marks per question	Weighting	Duration
1	Booklet A	Multiple-choice	10	1	50 Marks Approx. 56%	1h
			10	2		
	Booklet B	Short answer	10	2		
2	1 booklet <i>Use of calculator is allowed</i>	Short answer	10	2	40 Marks Approx. 44%	1h
		Structured/ Long answer	6	3, 4		
Total			46		90 Marks 100%	2h

Mother Tongue Language (Standard)

Paper	Component	Item Type	No. of items	Weighting	Duration
1	Topic Essay	Open-ended	2 Choose 1	20%	50min
	Picture Essay	Open-ended			
2	Booklet A (Language Use & Comprehension)	Multiple-choice	25	25%	1h 40min
	Booklet B (Language Use & Comprehension)	Multiple-choice & Open-ended	15	20%	
3	Listening Comprehension	Multiple-choice	10	10%	About 30min
4	Reading Aloud	Reading Aloud	1	10%	About 10min
	Video Stimulus-based Conversation	Speaking	1	15%	


Mother Tongue Language (Foundation)

Paper	Component	Item Type	No. of items	Weighting	Duration
1	Language Use & Comprehension	Multiple-choice & Open-ended	10	15%	40 min
2	Reading Aloud	Reading Aloud	1	15%	About 10min
	Video Stimulus-based Conversation	Speaking	1	40%	
3	Listening Comprehension	Multiple-choice	15	30%	About 30min

Mother Tongue Language (Higher)

Paper	Component	Item Type	No. of items	Weighting	Duration
1	Composition		2 Choose 1	40%	50 min
	1) Situational Writing 2) Continuous Writing	Open-ended Open-ended			
2	Language Use & Comprehension	Open-ended	23	60%	1h 20 min

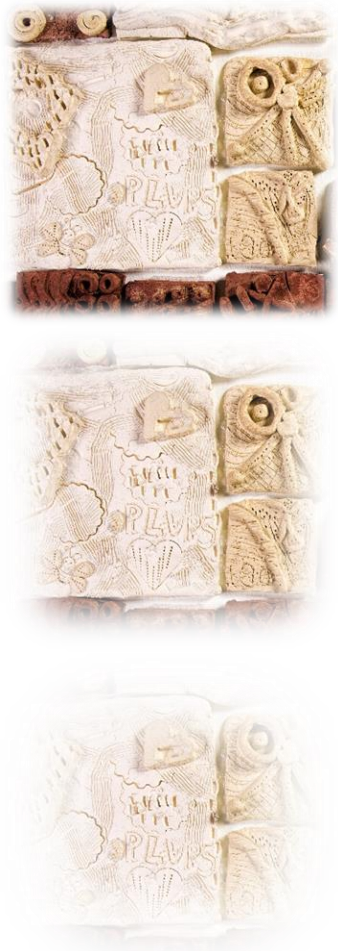
Science (Standard)



Component	Item Type	No. of questions	No. of marks per question	Weighting	Duration
Booklet A	Multiple-choice	28	2	56%	1h 45min
Booklet B	Open-ended	12 – 13	2 – 5	44%	

#CuriousMinds #CaringHearts #CreativeSpirits

Science (Foundation)



Component	Item Type	No. of questions	No. of marks per question	Weighting	Duration
Booklet A	Multiple-choice	18	2	36 marks (51.4%)	1h 15min
Booklet B	Structured	6 – 7	2 – 3	14 marks (20.0%)	
	Open-ended	5 – 6	2 – 4	20 marks (28.6%)	

Home-School Partnership

General Tips

- Ensure that your child completes and submits his/her work on time
- Allow time for consistent revision
- Make use of both print and online resources provided

Home-School Partnership

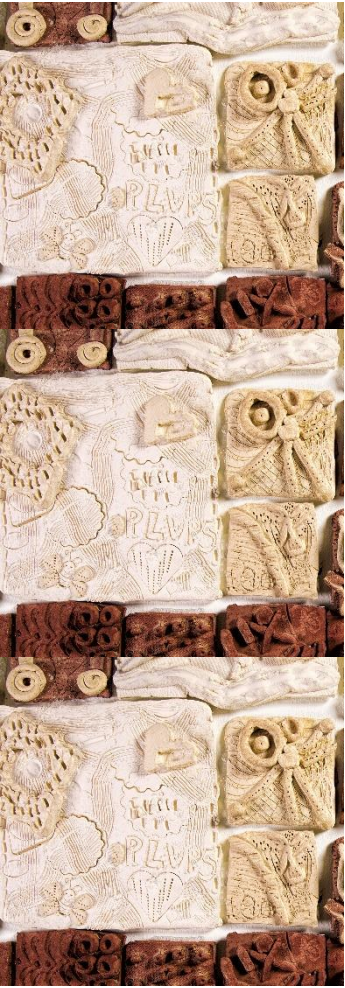
English & Mother Tongue Languages (MTL)

- Encourage your child to read daily (15-30 minutes)
- Read the newspapers and discuss interesting articles with your child
- Watch the news and ask him/her about her opinions on current issues (local/overseas)
- Encourage your child to speak Mother Tongue Language frequently

Home-School Partnership

Mathematics & Science

- Revise previous years' topics to reinforce concepts
- Parental teaching tips provided in Mathematics topical reviews
- Learn Science from daily life, society, environment:
 - Try simple Science experiments at home (daily life)
 - Subscribe to Science magazines and watch the Science documentaries (society)
 - Go outdoors for walks in parks and reserves (environment)



#CuriousMinds #CaringHearts #CreativeSpirits



Primary School Leaving Examination (PSLE)

PSLE 2022 Calendar (Tentative)

Registration	Mon, 7 Mar – Wed, 23 Mar 2022
Oral Examination	Thu, 11 Aug – Fri, 12 Aug 2022
Listening Comprehension	Fri, 16 Sep 2022
Written Examination	Thu, 29 Sep – Wed, 05 Oct 2022
Marking Exercise	Mon, 17 Oct - Thu, 20 Oct 2022

Post-PSLE Key Events

Stage	Key Events	Tentative Dates
1	Release of PSLE Results	24 th Nov (Tentative)
2	Submission of S1 Option Form for secondary school options <i>(S1 Internet System-Online / School)</i>	7 calendar days starting from release of PSLE results
3	Release of School Posting Results <i>(SMS, Online, Interactive Voice Response System or schools)</i>	Late Dec
4	Report to Secondary Schools for Registration	A day after the release of results



Direct School Admission (DSA-Sec Exercise)

Entering a Secondary School



PSLE / S1 Posting Process

- Based on a student's PSLE score
- Most students enter secondary schools this way



DSA-Sec

- Based on a diverse range of talents and achievements in specific academic subjects or non-academic areas, beyond what the PSLE recognizes
- Allows students to access school programmes to develop their talents



#CuriousMinds

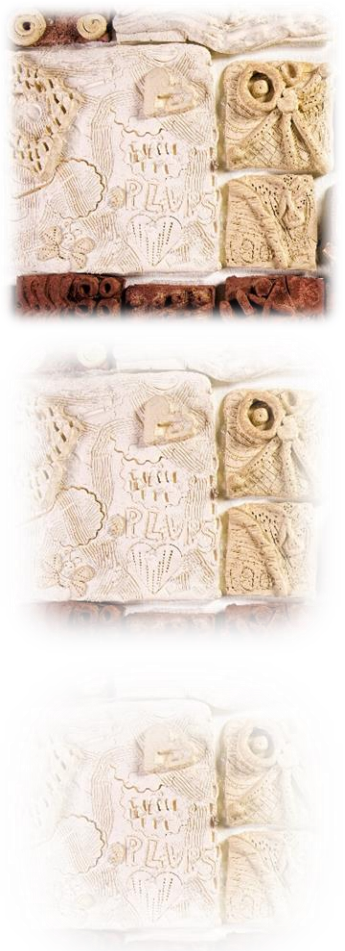
#CaringHearts

#CreativeSpirits

DSA-Sec Categories

- Creativity, Entrepreneurship and Innovation
- Languages and Humanities
- Leadership and Uniformed Groups
- Performing Arts
- Science, Technology, Engineering, Mathematics
- Sports and Games
- Visual Arts and Media

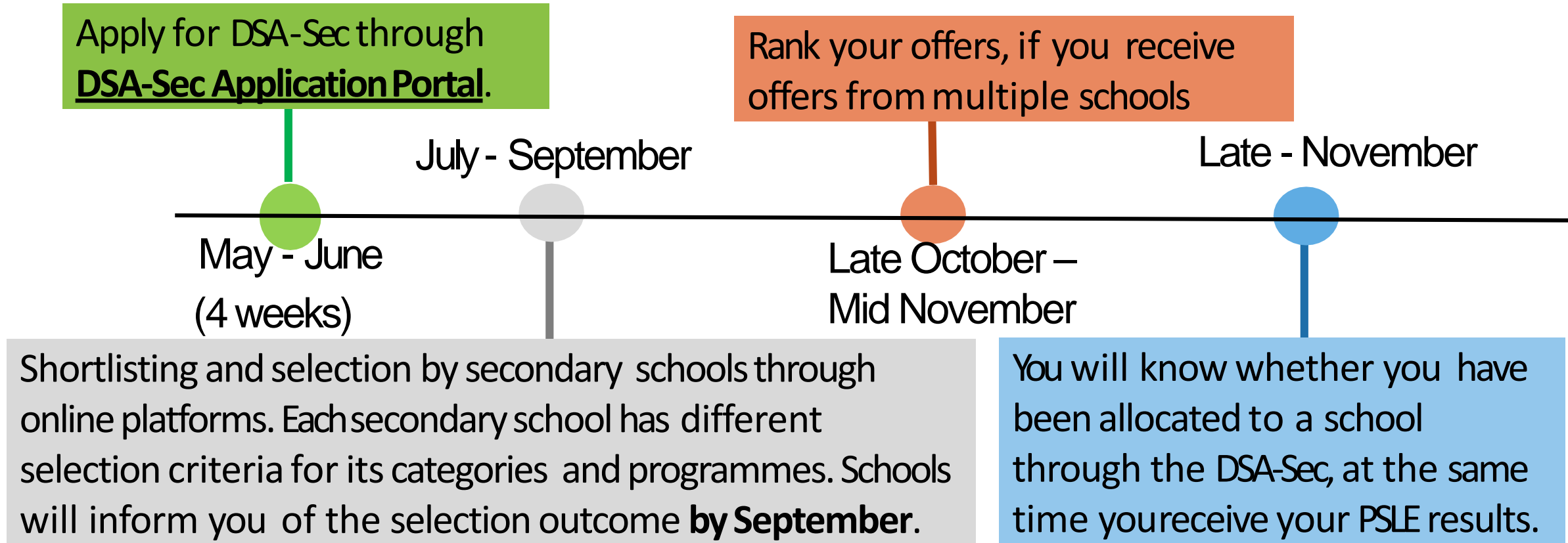
Which school should my child apply to?



- Look for a school with **programmes that match your child's strengths and interests**
 - ☐ Schools are looking out for students whose interests and talents they can develop further.
 - ☐ Learn more about the secondary school's **pace of learning** and overall range of programmes
- **Get the latest information** about what each school offers by:
 - ☐ Visiting schools' websites
 - ☐ Attending schools' Open Houses to also experience their environments and cultures
 - ☐ Visiting the MOE's DSA-Sec website

What is the timeline for DSA-Sec?

For reference, we refer to the 2021 DSA-Sec exercise.



Examples of Possible Choice Combinations

EXAMPLE 1	Talent(s)	School(s)	Your child can apply to <u>up to three different schools</u> , with no restrictions on the talent areas.
	Choir	School A	
	Choir	School B	
	Choir	School C	
EXAMPLE 2	Talent(s)	School(s)	If your child chooses two areas in one school, he/she can apply to two different schools only .
	Choir	School A	
	String Orchestra	School A	
	Choir	School B	
EXAMPLE 3 (Not allowed)	Talent(s)	School(s)	Your child cannot use all three choices on one school. He/she can leave the third choice blank or choose another school.
	Choir	School A	
	String Orchestra	School A	
	Mathematics	School A	

What are schools looking for?

- The selection process differs across schools, and across different DSA-Sec categories.
- Generally, schools are looking for candidates with:

Talent, passion, commitment

- Schools may look at **achievements** and **participation** (e.g. in Junior Sports Academy).
- Schools may also conduct tests, trials or selection camps to identify students with **strengths, or sound fundamentals and potential**, in particular areas.

Strong personal qualities

- Schools may look at CCA records and VIA participation.
- Schools may also conduct interviews.

Good academic fit

- Schools may look at primary school results to ensure students can benefit from the school's pace of learning.

Students, be sincere, be genuine, and be yourself - if you are a good fit for the school, it will show.

#CuriousMinds

#CaringHearts

#CreativeSpirits

What are the possible DSA-Sec outcomes?

- **Confirmed Offer (CO)** Your child has a place reserved in the school, as long as his/her P S L E results qualify him/her for a course the school offers (i.e. Express, Normal (Academic) or Normal (Technical)).
- **Wait List (WL)** Your child will be given a place in the school if other students with Confirmed Offers do not take up those offers, and if his/her PSLE results qualify him/her for a course the school offers. Allocation will be based on students' rank on the school's Wait List.
- **Unsuccessful** Your child has not been given a place in the school. If your child still wishes to enter the schools he/she applied for, he/she can apply through the S1 Posting process using his/her PSLE results.

How are DSA-Sec places allocated?

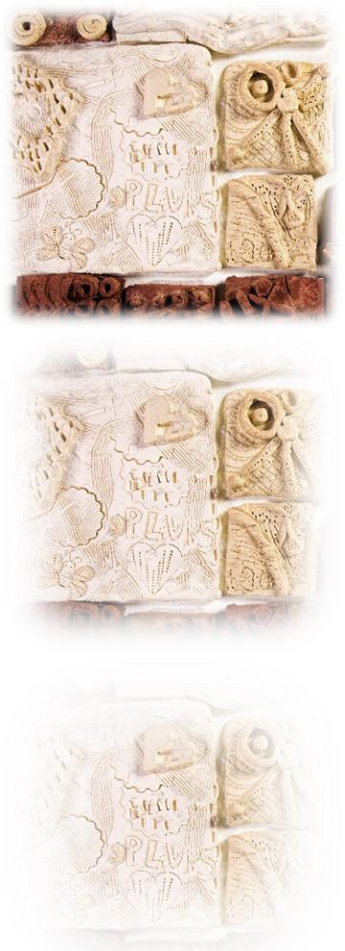
Example: Confirmed Offer vs Wait List

Hani is given Confirmed Offer by Courage Secondary. Hani selected Courage Secondary as her 2nd choice.

Victor is offered a Wait List by Courage Secondary. Victor selected Courage Secondary as his 1st choice.

Who will be considered for a place in Courage Secondary first?

Hani will be considered for a DSA—Sec place in Courage Secondary before Victor, as she has a Confirmed Offer.



If my child have a DSA-Sec Confirmed Offer, does it mean that his/her PSLE results will not matter?

- Your child’s PSLE results will still be **used to determine the secondary school course he/she is eligible** for (i.e. Express, Normal (Academic), Normal (Technical))
- Even if he/she has a Confirmed Offer, he/she **must qualify for a course offered by the school** to be admitted to the DSA–Sec school.

Example: Leo has a Confirmed Offer from Courage Secondary, which offers the Express Course only. However, Leo’s PSLE results qualify him for the Normal (Academic) course. Hence, Leo will not be able to go to Courage Secondary through DSA–Sec. If he is not allocated a place in another DSA–Sec school whose CO/WL offer he had accepted at the School Preference stage, he will participate in the S1 Posting.

Successful DSA Applications

2020		2021	
DSA Talent Area	No. of Students	DSA Talent Area	No. of Students
Bilingualism	1	Arts	2
Choir	1	Choir	1
Football	2	String Ensemble	1
Table Tennis	1	Basketball	1
Netball	1	Football	1
Basketball	3	Netball	2
Modern Dance	1	Taekwondo	1
Leadership	2	Infocomm	1
Taekwondo	1	STEM	2
STEM	1		

Just a note:

Naming convention for class ZOOM session:

Class Name (Register Number)

Example: 6A Mary (1)

*This is for verification purposes and to avoid uninvited guests.



Your feedback is important to us.

Thank you and have a lovely weekend.



<https://go.gov.sg/plvps-upper-primary-briefing>